

tobii^{pro}/nano



Enter the world of eye tracking research

Envision human behavior

Tobii Pro Nano

Tobii Pro Nano is our smallest, most lightweight research grade eye tracker featuring the latest technology from Tobii Pro. Its portability and capacity to track virtually anyone makes it perfect for collecting data efficiently in the field. The system is designed for the study of visual attention in areas like psychology, marketing research and education.

Get started with eye tracking

Tobii Pro Nano is the perfect tool for first-time users who want to study and analyze where someone is looking. The easy-to-use system lets you conduct quality eye tracking studies with minimal effort and investment.

Explore eye tracking as a research method in simple fixation-based studies to build your knowledge on how to analyze visual attention and ultimately gain valuable insights within a broad range of areas.

Teach students how to use eye tracking

Packages are available for equipping universities with portable eye tracking solutions to teach students how to use the technology in different fields. Our experts can help develop curriculums that demonstrate how it can be integrated as a tool to answer research questions and enhance commercial endeavors.

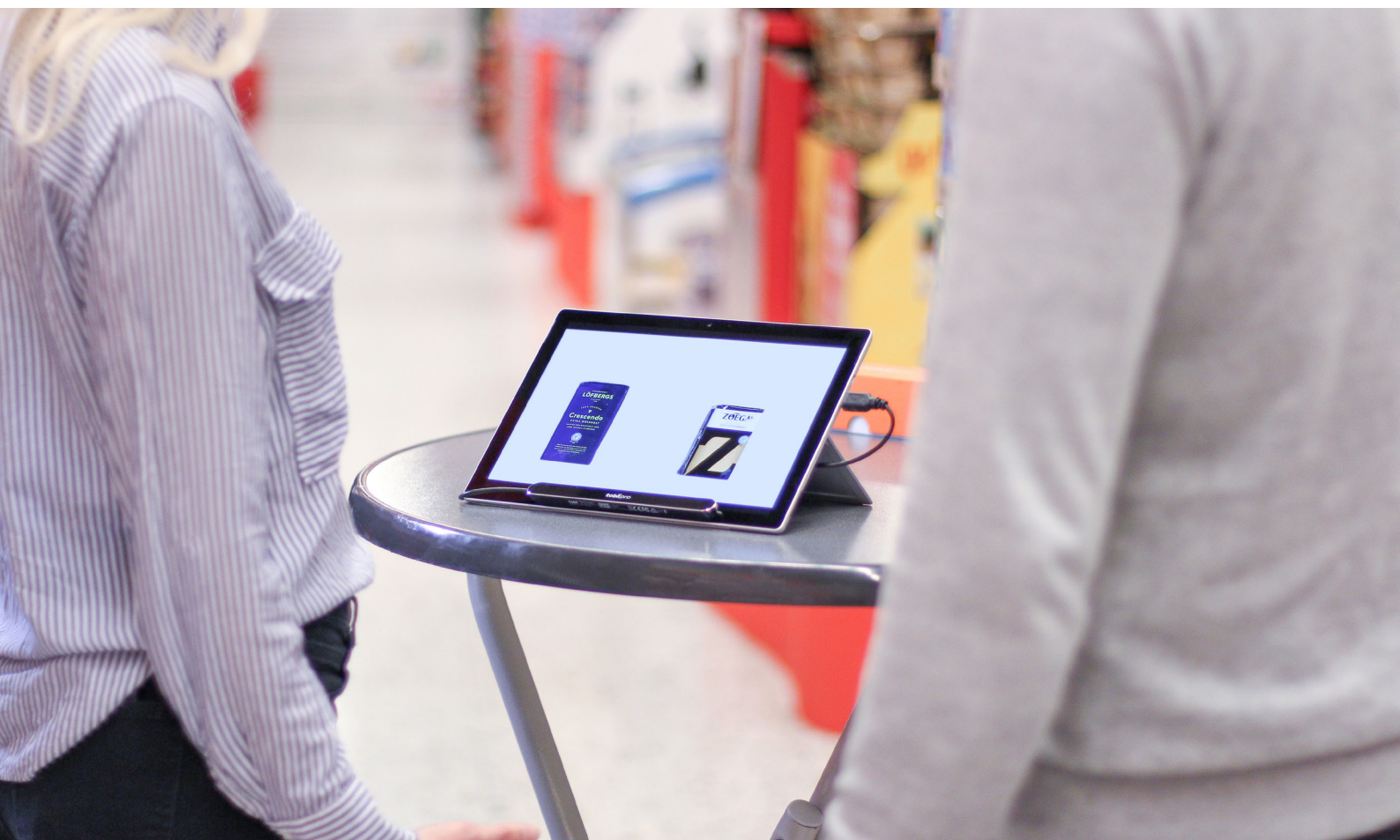
Easily collect data outside the lab

Pro Nano is designed for use with smaller screens providing a compact, fully-portable research solution. Present your stimuli on a Windows laptop or Windows tablet for data collection in authentic research environments. Bring your portable lab to universities, hospitals and public places – wherever your participants are.

The ability to track virtually anyone, as well as the simple setup and configuration, makes the system perfect for running studies efficiently outside the lab.

Tobii Pro Nano:

- attaches easily with supplied mounting plates on various screens.
- offers fully embedded processing of eye tracking data.
- connects via a USB 2.0 port directly to your computer.
- calibrates participants quickly.





Versatile for many types of studies

Pro Nano works with Tobii Pro Lab, a versatile software platform designed to meet the highest demands of different research scenarios with exact timing accuracy. This software offers an efficient workflow, making it easy to design experiments, record and analyze data, and obtain eye tracking visualizations.

By integrating the Shimmer3 GSR+ Unit, Pro Lab supports combining eye tracking and GSR data, throughout the entire workflow. The ability to send TTL signals on stimulus onset from Pro Lab allows precise synchronization of gaze information with data from other sources such as EEG or ECG.

The Tobii Pro SDK offers a comprehensive toolkit for researchers or partners, who wish to develop their own applications to use with Pro Nano or other screen-based eye trackers from Tobii Pro.

Pro Nano works with Windows laptops and Windows tablets and provides quality data for screens up to 19 inches in size. The system can also be used to study real-world stimuli, such as physical objects or people, which enhances your research opportunities.

Track almost anyone with quality data

The system's very high accuracy and proven vast tracking capabilities in many conditions offers a reliable solution for field tests involving large population samples and teaching contexts.

Key features:

- Extremely robust tracking capabilities, regardless of ethnicity or corrective lenses
- Tolerance for head movements and varied lighting conditions
- Eyes are detected instantly with minimal data loss during blinks or when participants look away
- Pupil data is captured at the same sampling rate as the gaze data

Research graded eye tracker

Pro Nano's high data quality has been confirmed through extensive testing. We use well-documented methods from systematic variations of environmental conditions to a general assessment of the eye tracker's performance within a large sample of individuals. This makes the system suitable for publishing research reports.

Multiple product certifications ensure that quality and user safety requirements are met.

Technical Specifications

Eye tracking specifications

Eye tracking technique	Corneal reflection, dark and bright pupil combination, one camera system.
Sampling frequency	60 Hz
Accuracy*	0.3° at optimal conditions
Precision*	0.10° RMS at optimal conditions
Binocular eye tracking	Yes
Freedom of head movement	Width x height: 35 cm x 30 cm (13.78" x 11.81") at 65 cm (at least one eye tracked)
Operating distance	45 to 85 cm (18 to 33")
Max gaze angle	30 degrees
Max screen size	19" (16:9 aspect ratio)
Total system latency	17 ms
Blink recovery time	1 frame (immediate)
Gaze recovery time	250 ms
Data output (for each eye)	Timestamp Gaze origin Gaze point Pupil diameter Validity code

*Tobii Pro uses an extensive testing method to measure and report data quality. If you would like to see the data quality test report, please download it at tobii.com.

Eye tracker

Dimensions	17 (width) x 1.8 (height) x 1.3 (depth) cm
Weight	59 g
Eye tracker processing	EyeChip
Connectors	USB 2.0 Type A
Operating system	Windows 10 (Pro edition)

Software compatibility

Tobii Pro Lab
Tobii Pro Eye Tracker Manager
Tobii Pro SDK
Any application built on the Tobii Pro SDK



tobii pro

Scale 1:1

© TobiiPro®. Illustrations and specifications do not necessarily apply to products and services offered in each local market. Technical specifications are subject to change without prior notice. All other trademarks are the property of their respective owners.

Tobii Pro provides eye tracking research solutions and services designed to deepen our understanding of human behavior. Headquartered in Sweden, with local teams active on six continents, we help business and science professionals to further their research.

tobii.com
sales@tobii.com

tobii pro